

# record THERMCORD RC 2 & RC 3



## Effective burglar resistance with efficient energy saving properties – from record

Whatever it takes: record, the world of automatic doors: Secure and effective RC 2 and RC 3 burglar resistance for increased security requirements.

50 % of all burglary attempts fail and are abandoned after only three to five minutes if doors are equipped with burglar-resistant and reinforced elements. At record we offer various systems with resistance classes such as RC 2 or RC 3 tested and certified according to EN 1627, which are also suitable for escape and rescue routes.

Protect your valuables with record THERMCORD, a thermally separated energy-saving door designed to be a burglar-resistant security door according to resistance class RC 2 or RC 3. Special constructive measures, stiffeners and reinforced elements integrated in the door system provide effective protection against intruders.

record THERMCORD RC 2 and RC 3 is therefore perfectly suited as an exterior door to protect you from cold or heat loss as well as to ward off burglary attempts. It is the ideal entrance door for your shop, hotel or office building. You get effective burglar resistance in combination with efficient energy-saving properties that reduce your energy costs.

## Technical data

Resistance class		RC 2		RC 3
		Double leaf sliding door	Single leaf sliding door	Double leaf sliding door
Opening width	(A) <sup>1)</sup>	800 – 3 000 mm	800 – 2 500 mm	800 – 3 000 mm
Passage height	(G) <sup>1)</sup>	Maximum 3 000 mm	Maximum 3 000 mm	Maximum 3 000 mm
Beam length	(F)	2 A + 250 mm (min. 1 950 mm)	2 A + 125 mm	2 A + 250 mm (min. 1 950 mm)

<sup>1)</sup>Max. door leaf size depending on glass type and wind load

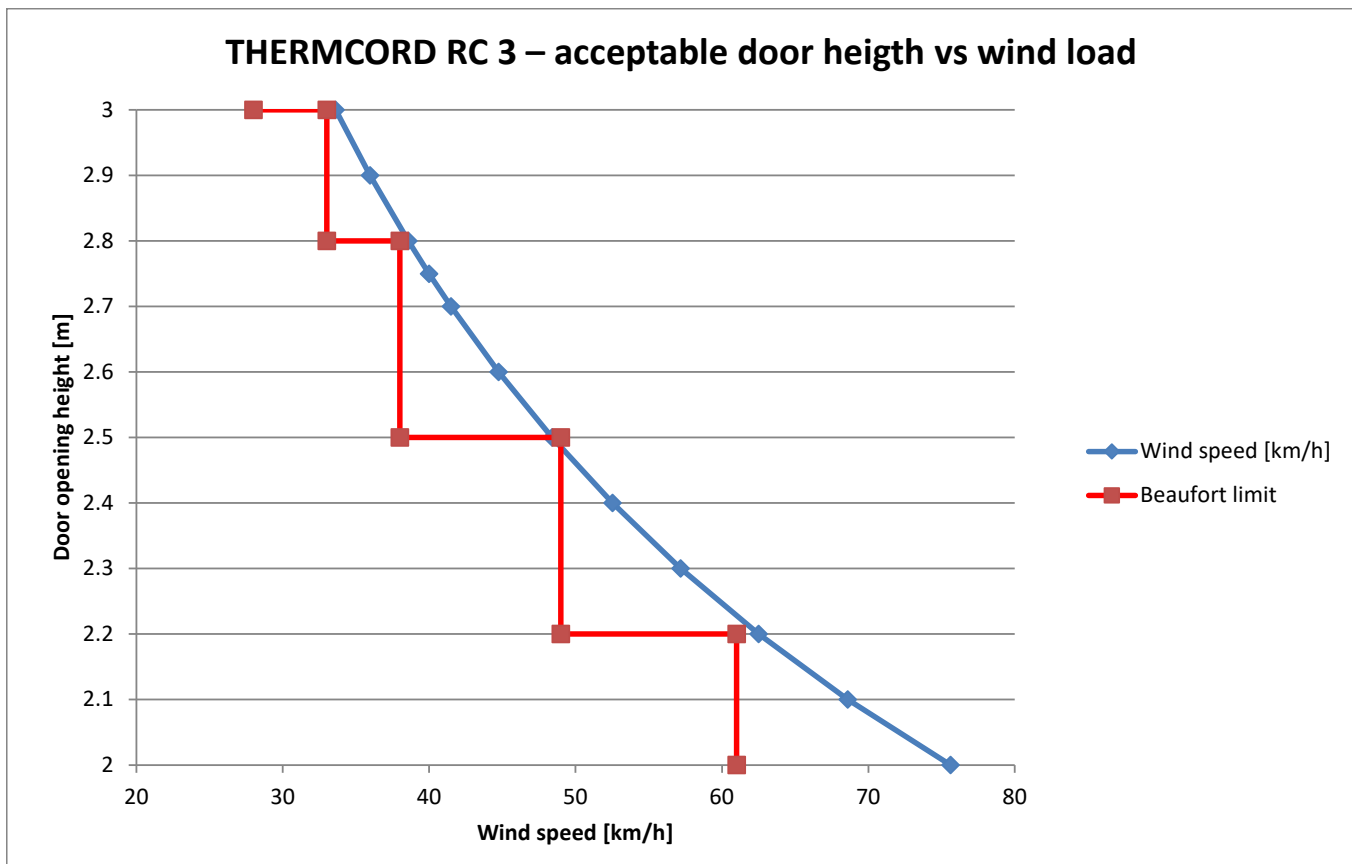
Drive dimensions				
with cladding (and side screen)	(D x H)	210 x 150 mm		not available
with cladding (without side screen)	(D x H)	210 x 150 mm		not available
without cladding (without side screen)	(D x H)	157 x 150 mm		not available
with cladding (and side screen)	(D x H)	210 x 200 mm		210 x 200 mm
without cladding (without side screen)	(D x H)	167 x 200 mm		167 x 200 mm*
with cladding (without side screen)	(D x H)	210 x 200 mm		210 x 200 mm*

\*Suitable for escape and rescue routes, but please note the reduced wind load limit. See graphic on following page

# record THERMCORD RC 2 & RC 3



THERMCORD RC 3 without side screen  
Wind load limit for escape and rescue routes



## Maximum weight of door leaves

Drive	record STA 20		2 x 120kg	1 x 150kg
	record STA 20	RED / DUO	2 x 150kg	1 x 150kg
Drive	record STA 20-200	RED / DUO	2 x 150kg	1 x 200kg
	record STA 22	RED / DUO	2 x 200kg	1 x 250kg

Door leaf weights for escape route doors		Double sliding door	Double Telescope	Single leaf sliding door	Single leaf Telescope
RED DIN 18650	150mm	2 x 150kg	4 x 90kg	1 x 150kg	2 x 130kg
	200mm	2 x 150kg	4 x 90kg	1 x 200kg	2 x 130kg
	200mm (Heavy)	2 x 200kg	4 x 130kg	1 x 250kg	2 x 170kg
CO48	150mm	2 x 90kg	4 x 35kg	1 x 150kg	2 x 75kg
	200mm	2 x 120kg	4 x 80kg	1 x 200kg	2 x 130kg

## Drive connection data

Rated voltage	100 – 240VAC, 50/60Hz
Rated power	90W
Consumption in idle mode	Approx. 25W

## Environmental conditions

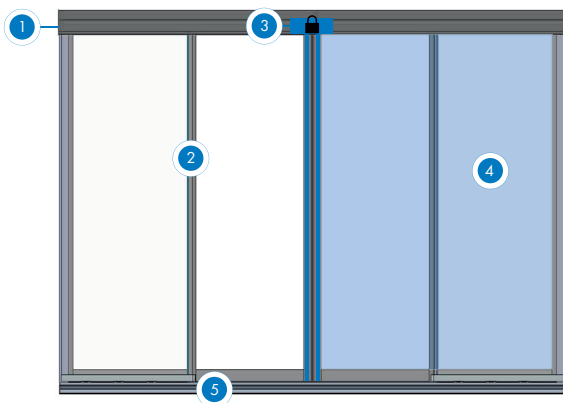
Basic data	
Temperature range	- 15° bis + 50°C
Humidity range	up to 85% rel. humidity, no condensation

## General technical features

Motorisierung und Antrieb	
Motor power	up to 200 W
Gearbox	worm gearbox
Drive	gear belt

## Certifications

Conformity to standards	
RC2 and RC3 according to EN 1627 for increased safety	
EN 16 005, DIN 18 650, EN 1627	
Maximum speed	0.75 m / s



- 1 Panel profile, thermally separated
- 2 Reinforced door leaves and vertical profile for increased security
- 3 Electronic multi-point locking (MPV) as standard for convenient locking at the touch of a button
- 4 Burglar-resistant safety glass of class P5A according to EN 356
- 5 CNS floor rail with continuous centreboard

record THERMCORD RC 2 / RC 3 is equipped with a multi-point locking system MPV as standard in addition to the sophisticated reinforcements. An electromechanical locking unit with an improved transmission gear, is located in the drive housing to protect against manipulation. Furthermore, two rods running longitudinally through the door, which are completely integrated into the door leaf, are lowered several centimetres deep into the holes provided in the floor rail. The parts used are all made of stainless steel and have the necessary strength to prevent forced entry as far as possible.

# Evidence of Performance

Burglar resistance

## Expert Statement

No. 17-002022-PR05

(GAS-D02-0511-en-01)



Client  
agtatec ag  
Allmendstr. 24  
8320 Fehrltorf  
Switzerland

Product	Burglar resistant automatic sliding door
Designation	record THERMCORD 38
Overall dimensions (W x H)	945 mm to 6,200 mm x 2,200 mm to 3,200 mm (Maximum dimensions of leaf and panel shall be observed)
(Frame) Material	Aluminium, THERMCORD 38
Attack side	Outside of building
Type of opening	Slide, scheme C
Glazing	Double insulating glass unit, Class P5A as per DIN EN 356 agtatec associated hardware with minimum 3 rollers per leaf, continuous guide at bottom, 2 locking devices per leaf, electro- mechanical locking device
Hardware	

### Basis

DIN EN 1627 : 2011  
Pedestrian doorsets, windows, curtain walling, grilles and shutters - Burglar resistance - Requirements and classification

DIN EN 1628 : 2011  
DIN EN 1629 : 2011  
DIN EN 1630 : 2011

Test report 17-002022-PR04 dated 25.05.2018

Design sheets  
Annex 1, page 1 to 10

Expert statement 17-002022-PR05 (GAS-D02-0511-de-01) dated 22.06.2018

### Validity

Testing for burglar resistance does not allow any statement to be made on any further characteristics regarding performance and quality of the construction submitted.

Validity of the expert statement expires with expiry of any one of the above items referred to as basis (standards or test reports).

Burglar resistance according to DIN EN 1627 : 2011



RC 3\*)

\*) Based on the test reports/evidence listed on the right and the and supplementary data due to modifications

### Notes on publication

The ift Guidance Sheet "Conditions and Guidance for the Use of ift test reports" applies.

The cover sheet including the type list can be used as an abstract.

ift Rosenheim

27.06.2018

Konrad Querengässer, Dipl.-Ing. (FH)  
Head of Testing Department  
Security/Safety Testing

Simon Stürer  
Operating Testing Officer  
Security/Safety Testing

### Contents

The expert statement contains a total of 16 pages

Cover sheet,

Type list,

Expert Statement

1 Order

2 Basis of evaluation

3 Evaluation

4 Results and statement

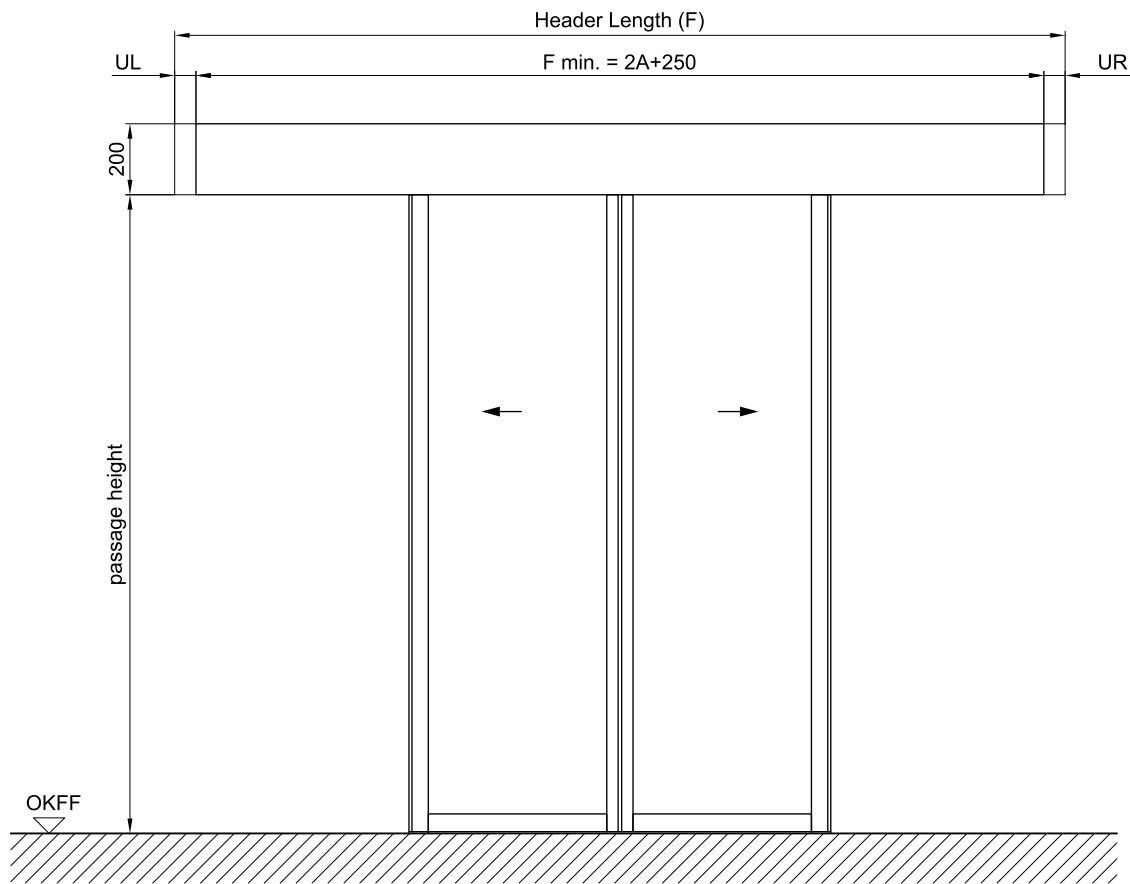
Annex 1, (10 pages)

### Type list

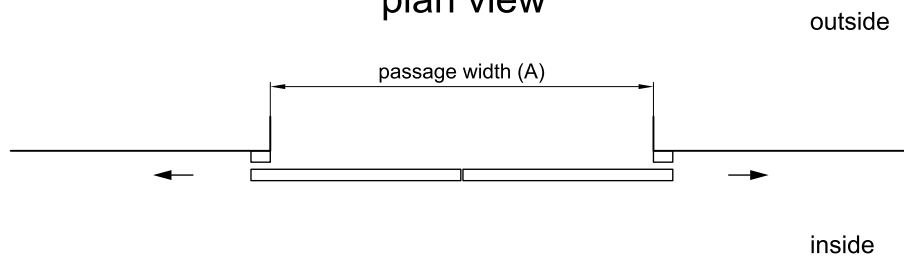
No.	Tested / approved design	Design variants approved by expert statement	Evidence / reports Requirements
1.	Burglar resistant double leaf sliding doors with overall dimensions 4,205 mm x 2,950 mm in profile system THERMCORD 38; designed in scheme C, with 2 burglar resistant locking devices per leaf and 3 roller per leaf	<p><b>Alternative element sizes and variants</b></p> <p>Design of tested double leaf sliding doors with/ without panels in scheme C with alternative sizes.</p> <p>Overall leaf dimensions: 472.5 mm to 1,572.5 mm x 2,000 mm to ,3050 mm</p> <p>Panels: 500 mm to 1,600 mm x 2,000 mm to 3,050 mm</p> <p>Plant sizes with/without panels 945 mm to 6,200 mm x 2,200 mm to 3,200 mm</p> <p>Clear opening width and clear opening height: 800 mm to 3,000 mm x 2,000 mm to 3,000 mm</p> <p>With leaf width up to 750 mm (clear width 1,400 mm) use 2 rollers, from leaf width of 751 mm always 3 rollers are to be used.</p> <p>The operating element must be installed in such a way that a minimum distance of 1,200 mm is ensured between the ultimate element edge and the operating unit.</p> <p>see Annex 1, page 1</p>	Test report 17-002022-PR04 dated 25.05.2018
2.	Burglar resistant double leaf sliding doors with overall dimensions 4,205 mm x 2,950 mm in profile system THERMCORD 38; designed in scheme C, with 2 burglar resistant locking devices per leaf and 3 roller per leaf	<p><b>Alternative assembly execution</b></p> <p>Design of tested double leaf sliding doors as lintel installation with P1967 adapter lintel profile</p> <p>Lintel installation without panels and without cover plate only permitted with 3 rollers per leaf.</p> <p>see Annex 1, page 3 to 8</p>	Test report 17-002022-PR04 dated 25.05.2018
3.	Burglar resistant double leaf sliding doors with overall dimensions 4,205 mm x 2,950 mm in profile system THERMCORD 38; designed in scheme C, with 2 burglar resistant locking devices per leaf and 3 roller per leaf	<p><b>Alternative sealing types</b></p> <p>Design of tested double-leaf sliding doors alternatively with the sealing variant on the main closing edge P2150 centre seal TC RC3 102-376122624</p> <p>see Annex 1, page 2</p>	Test report 17-002022-PR04 dated 25.05.2018

End of type list.

### internal view



### plan view




U/T = Header Overlength on demand

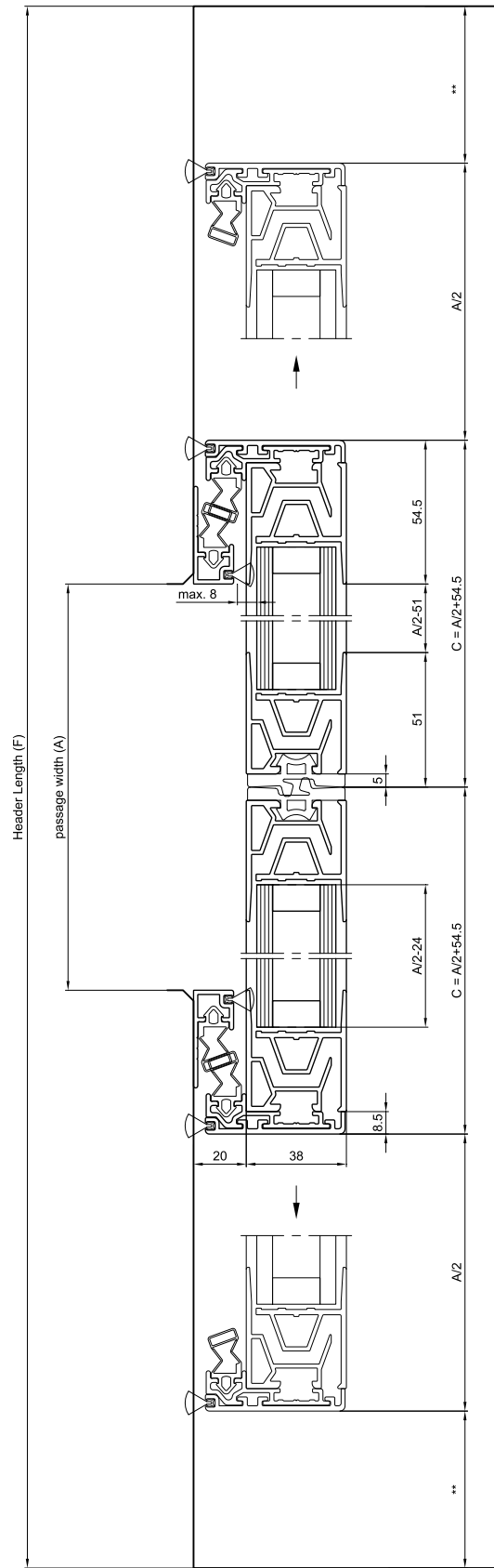
Verwendung für / use for / Utiliser pour

TC	TC+	TC3	TC RC2	TC RC3
✓	✓	—	✓	✓

technical Modification reserved !

<b>ANr.</b> client com.: ADM	colour		scale: 1:20	 <b>MP-102-10031 A</b>
	<b>THERMCORD, D-STA</b> View Without side screens			





Verwendung für / use for / Utiliser pour

TC	TC+	TC3	TC RC2	TC RC3
✓	✓	-	✓	-

\*\* safety margin according to regulation

technical Modification reserved !

ANr.
client
com.:
ADM

colour	scale: 1:2.5
THERMCORD, D-StA Horizontal section Without side screens	

MP-102-10015 D